

CERTIFICATE OF LOCATION OF GOVERNMENT CORNER

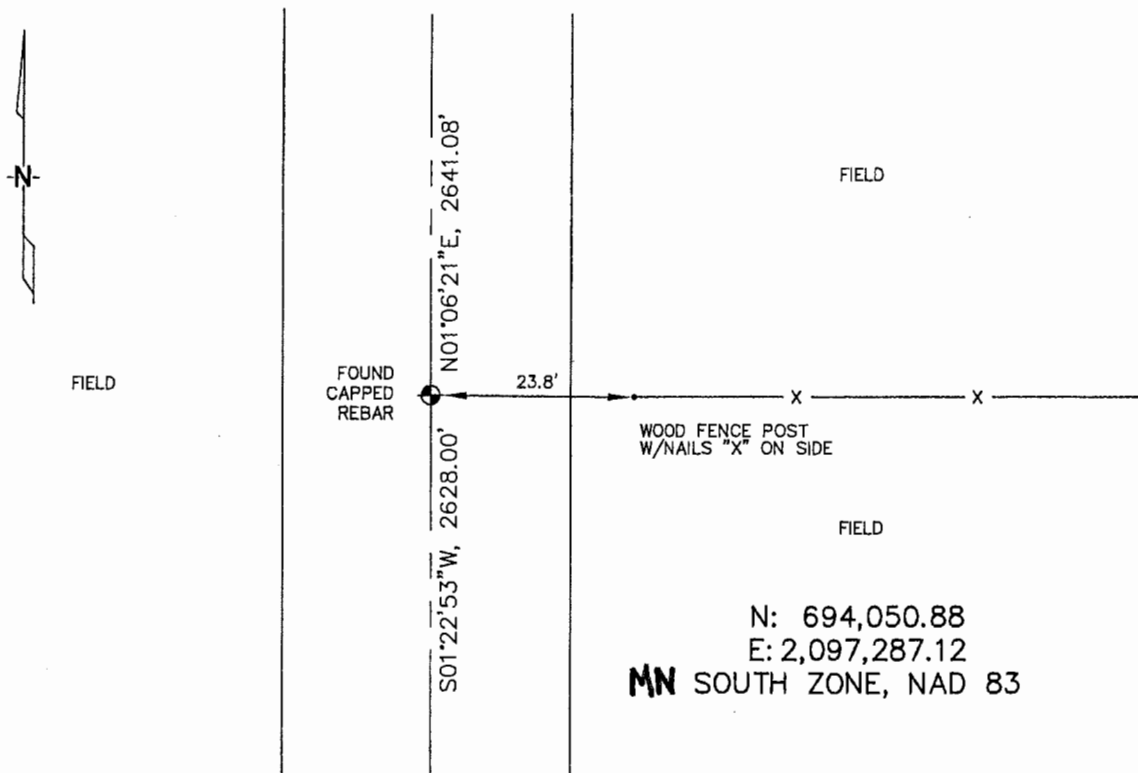
WEST 1/4 Corner of Section 15, Township 106, Range 43, 5th P.M.

STATE OF MINNESOTA, County of MURRAY

At the corner location shown on the sketch :

- On 3/22/2006 found REBAR W/ UNREADABLE CAP IN GRAVEL ROAD,
OPPOSITE FENCE LINE RUNNING EAST.
- left monument as found, lowered monument, removed monument (explain)
- On _____ set _____

Sketch of reference ties



Statement of evidence relative to this corner location is on back page

I hereby certify that this document and the data contained herein was prepared by me or under my direct supervision.

James V. Johnson 4/24/06
Signature Date

- Registration No. 44563
- Land Surveyor, Professional Engineer
 - County Surveyor, County Engineer

OFFICE OF THE COUNTY RECORDER

County of _____

SEP 28 2006

I hereby certify that this document was filed in the Co. Recorders office at _____ .M. on the day of _____ A.D. , 20

County Recorder James V. Johnson
By _____, Deputy

DOCUMENT NO. _____

STATEMENT OF EVIDENCE:

WEST 1/4 CORNER, SECTION 15, T. 106 N., R. A3 W.,
MURRAY COUNTY, MINNESOTA

1866

J.W. BISHOP, US DEPUTY SURVEYOR, MONUMENTED CORNER.

3/22/2006

ULTEIG ENGINEERS, INC. SURVEY CREW, BRIAN PAYNE
PARTY CHIEF, FOUND REBAR W/ UNREADABLE GAO
IN GRAVEL ROAD, OPPOSITE FENCE LINE
RUNNING EASTERLY.

TIES: E - 23.8' TO WOOD, FENCE POST WITH
NAILED "X" ON SIDE OF POST.
N - 2641.08' TO NW CORNER, SEC 15.
S - 2628.00' TO SW CORNER, SEC 15.